

DEHO Q L

L405L.

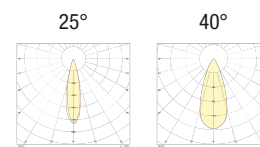
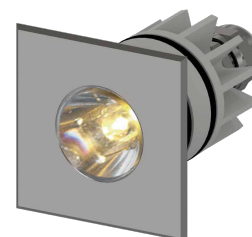
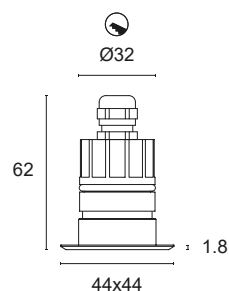


Recessed light with polished 316L stainless steel ring and anticorodal anodised aluminium heat sink, power LED for accent, decoration, courtesy or step marker lighting. Choice of secondary optics. Can be fitted in the floor, wall or in plasterboard indoors and outdoors. Mounting with formwork or ring with springs.

Power LED CRI>80
Power: 1.6W@24Vdc
Lumen: 132Lm@24Vdc
Constant 24Vdc voltage supply
Parallel connection, 50 cm cable

Constant voltage power supplies page 237
Installation accessories page 271
Dimming Accessories page 249

 **MADE IN ITALY**





BASIC CODES

L405L.




LIGHT BEAM

-  **25** 25°
-  **40** 40°

GLASS

-  **T** Transparent
-  **S** Brushed

LED COLOUR

-  **BN** 4000K
-  **BC** 3000K
-  **CC** 2700K

Code example:

DEHO Q L+ Light Beam 25° + Clear Glass + 3000k = Code: L405L.25TBC